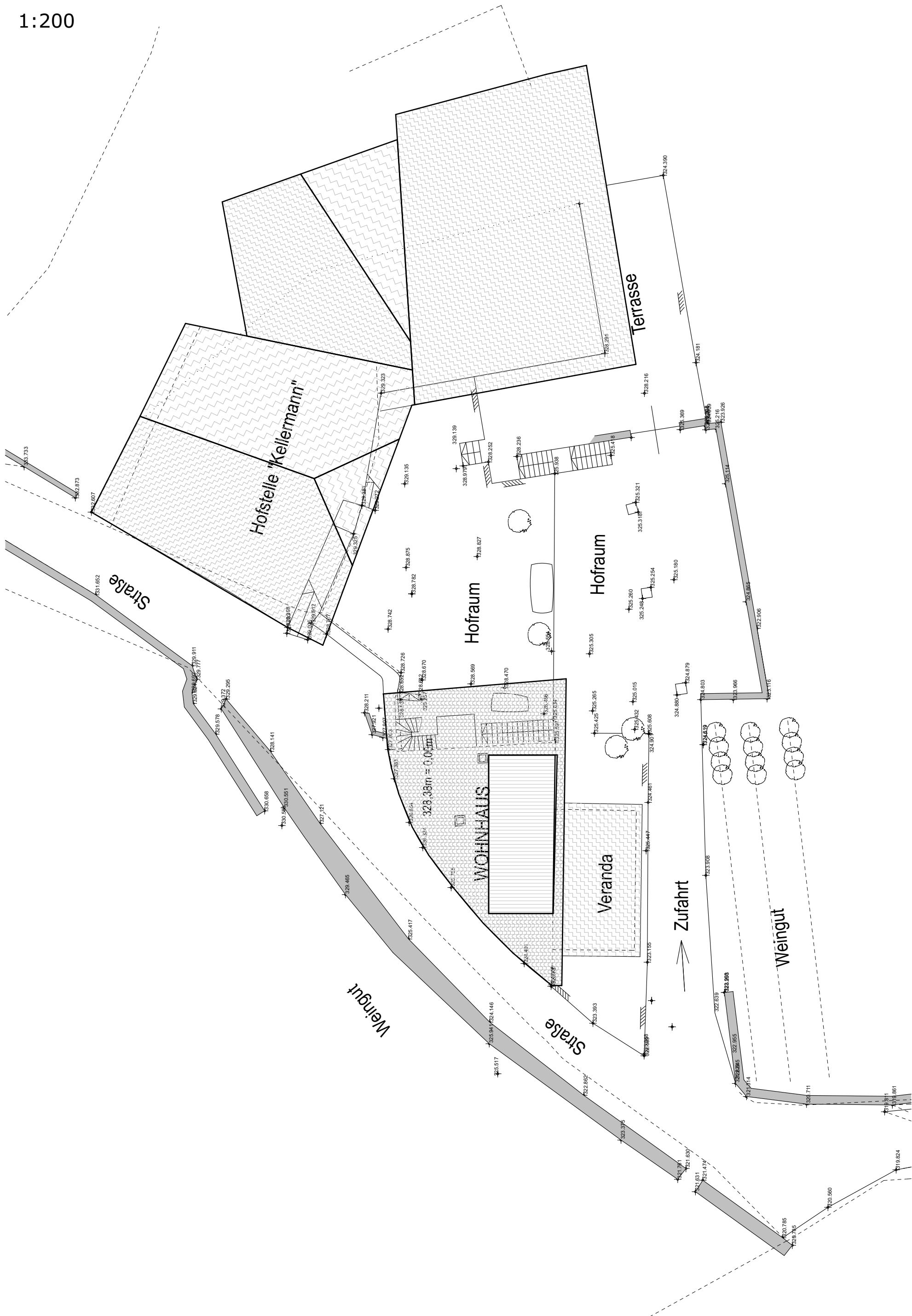


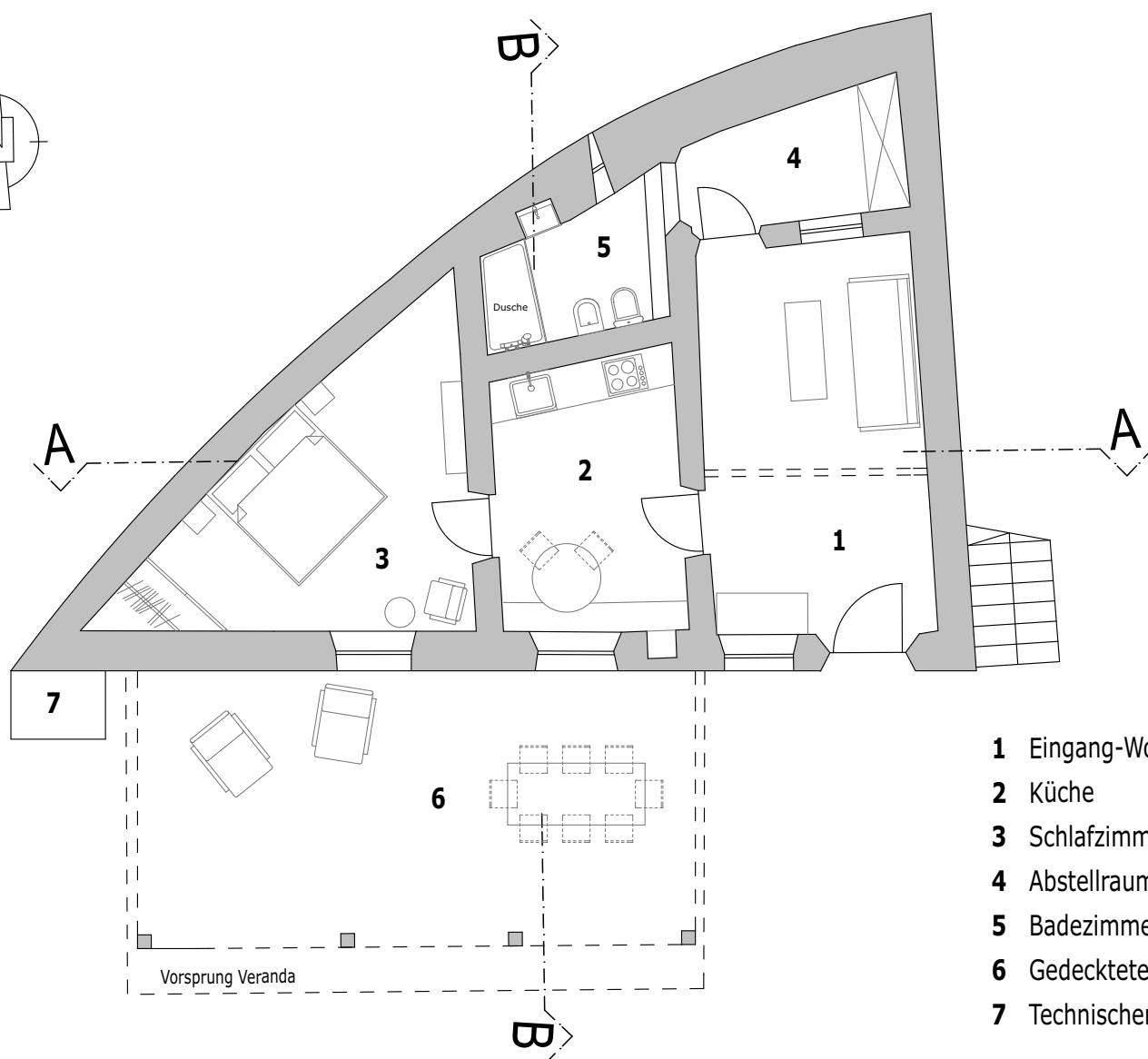
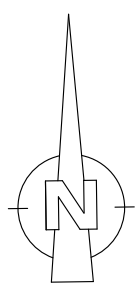
LAGEPLAN

1:200



KELLERGECHOSS

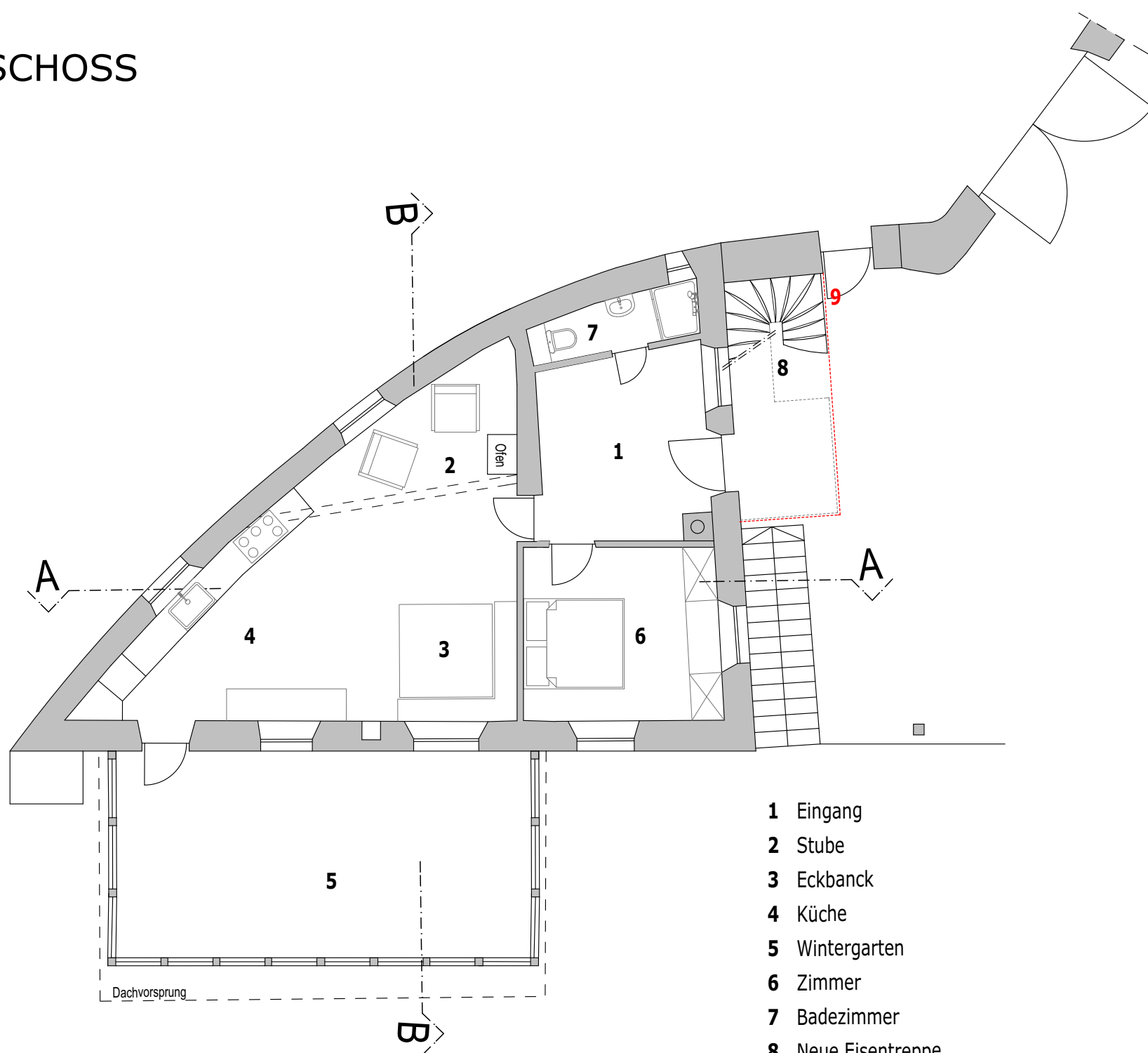
1:100



- 1 Eingang-Wohnzimmer
- 2 Küche
- 3 Schlafzimmer
- 4 Abstellraum
- 5 Badezimmer
- 6 Gedeckterrasse
- 7 Technischer Raum

ERDGESCHOSS

1:100



- 1 Eingang
- 2 Stube
- 3 Eckbanck
- 4 Küche
- 5 Wintergarten
- 6 Zimmer
- 7 Badezimmer
- 8 Neue Eisentreppe
- 9 Evtl. Volumenglas

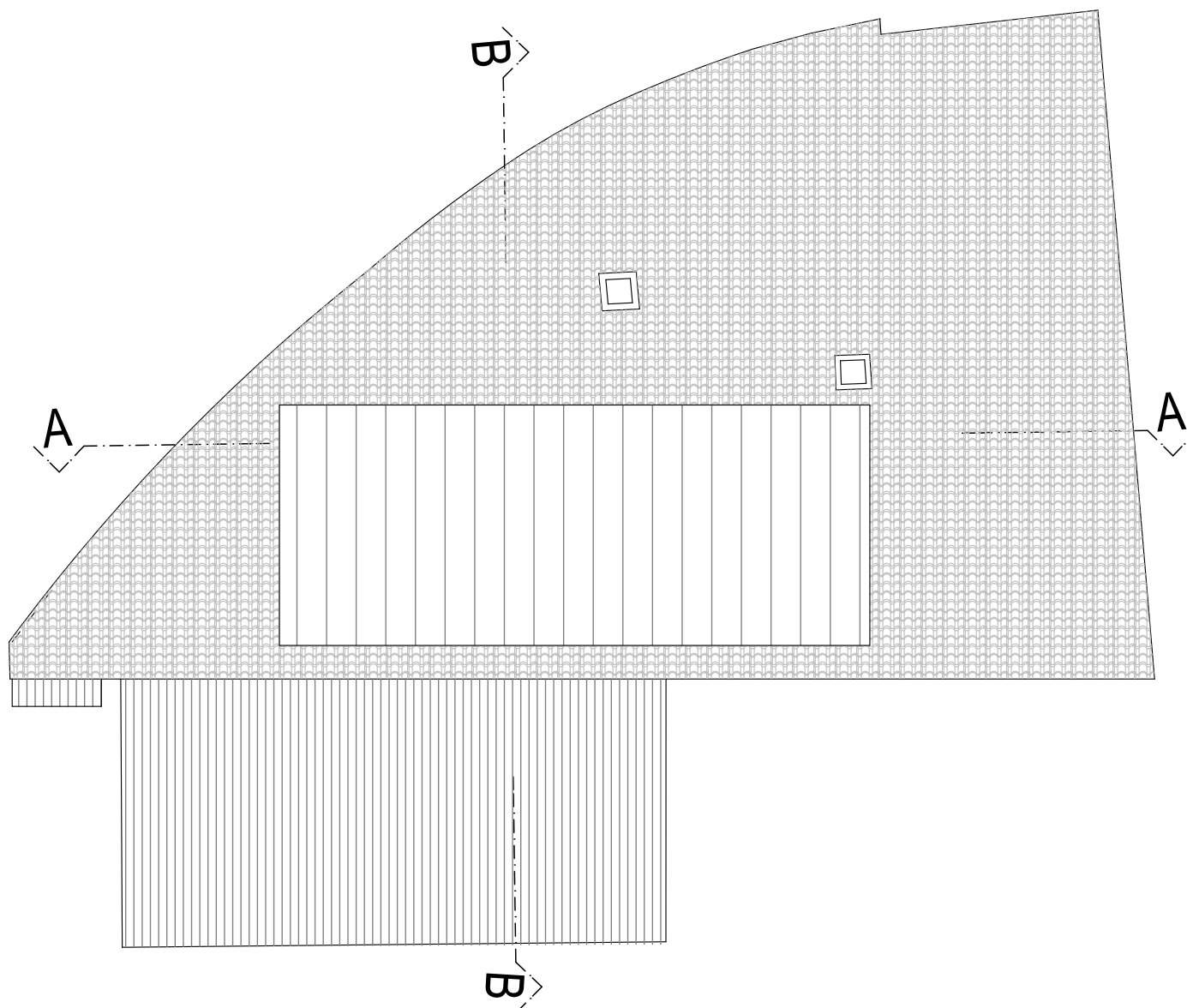
OBERGESCHOSS

1:100



DACHGESCHOSS

1:100



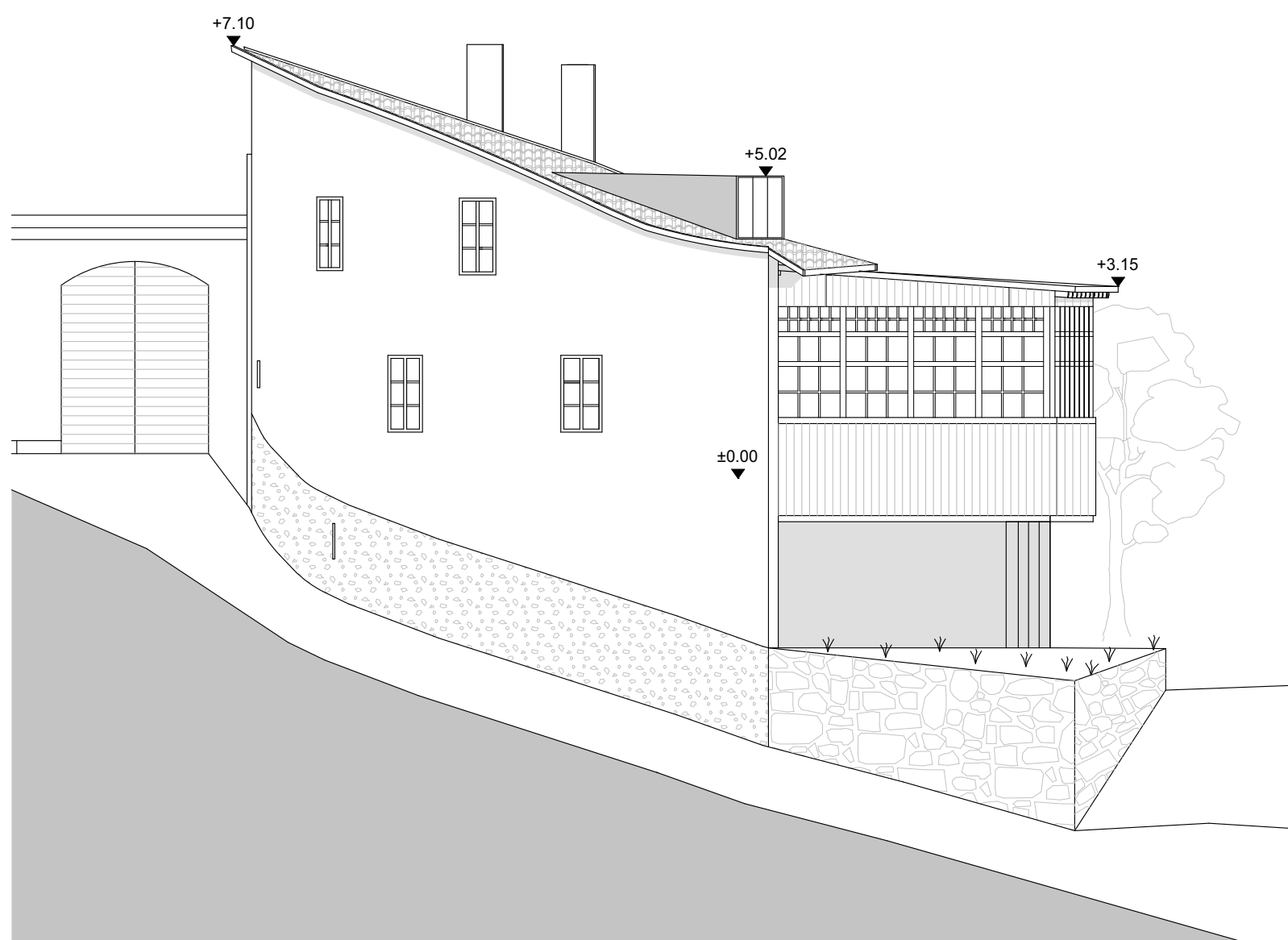
SÜDANSICHT

1:100



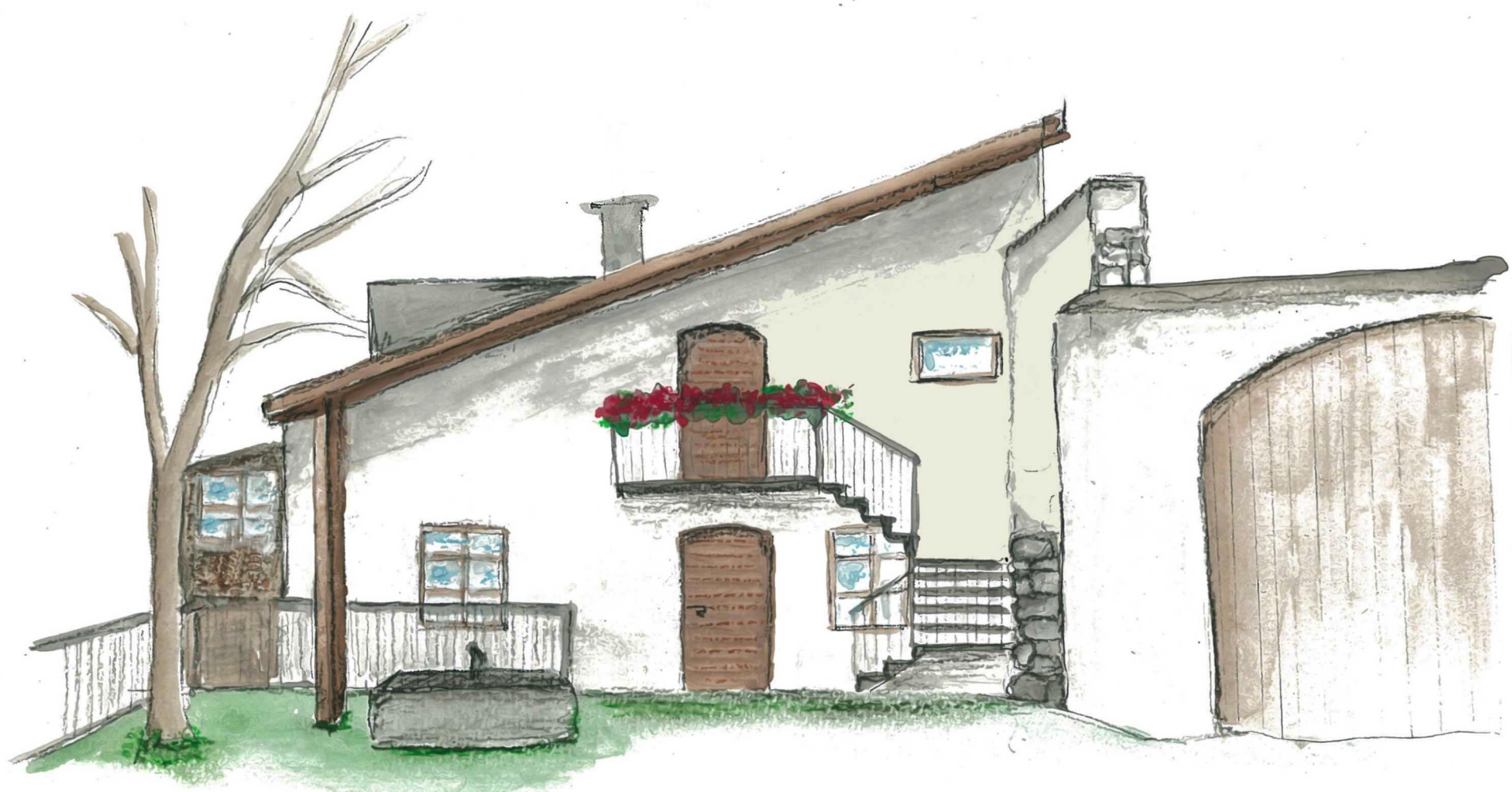
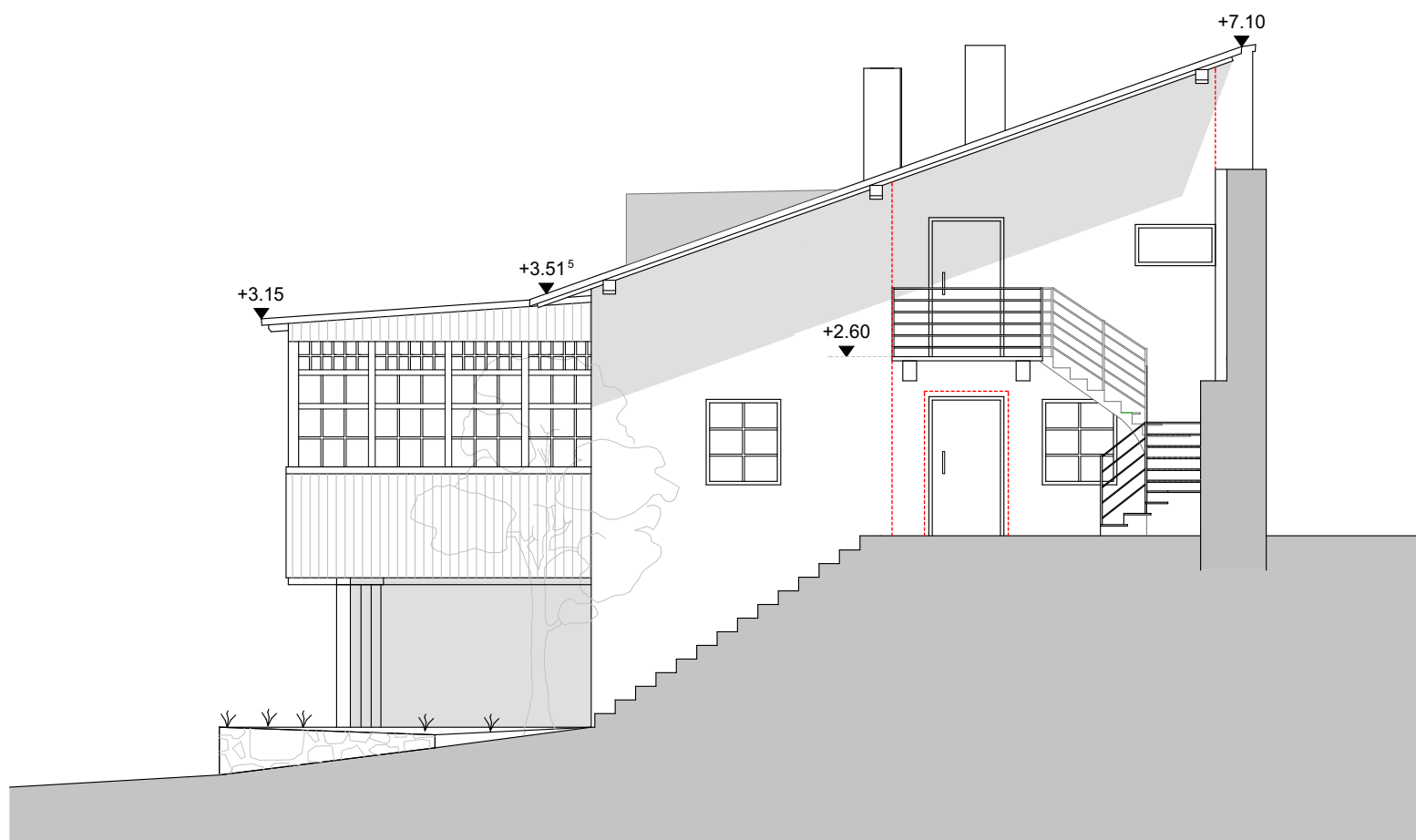
NORDWESTANSICHT

1:100



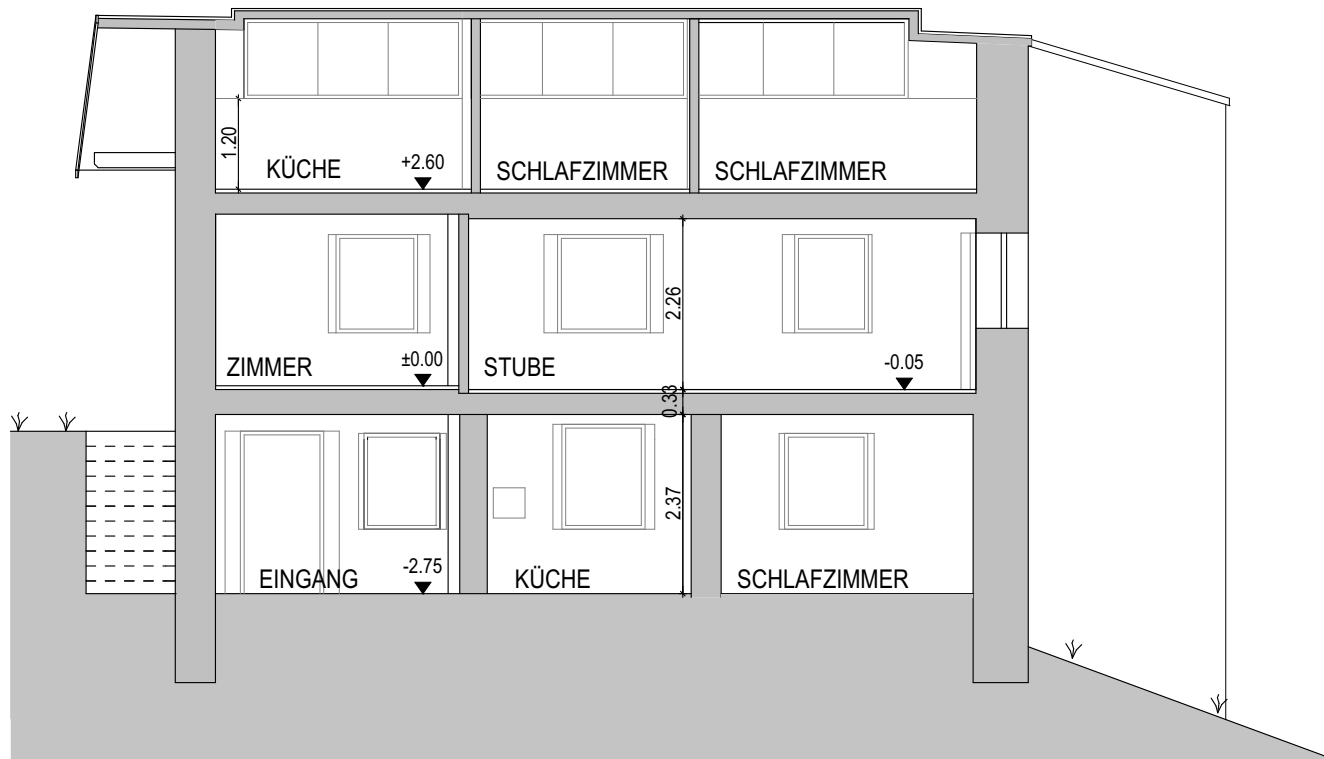
OSTANSICHT

1:100



SCHNITT A-A

1:100



SCHNITT B-B

1:100

